



Application

Volumetric Hatch

Volumetric measurement of free flowing bulk products, such as:

- Clean, dry or wet, rolled or crushed aggregates.
- Non liquefying powders.

The volumetric hatch can be placed under vertical silos, hoppers, quarry recovery tunnel, upstream of a weighed belt and many other installations.

It is particularly suitable for the following industries:

- ▼ Quarries - aggregates
- ▼ Volumetric recomposition
- ▼ Steel industry
- ▼ Agri-bulk
- ▼ Fertilizer
- ▼ Animal feeds
- ▼ Isolated loading station

The accuracy is from $\pm 3\%$ to 5% depending on the installation, characteristics and behaviour of the product to be dosed.

Product models

Model	Opening cross-section (mm)
TD33	300 x 300
TD44	400 x 400
TD55	500 x 500
TD66	600 x 600
TD77	700 x 700

Description

The volumetric hatch is designed to operate in the most arduous environments.

The hatch is a welded construction, in hot-dip galvanised S235JR grade steel. Its manufacturing quality ensure it is:

- Rugged,
- Reliable,
- Easy to maintain.

It consists of two distinct parts:

- A fixed frame in which the hatch opening dimensions determine the maximum flow that can be controlled.
- A movable section comprising a guillotine in zinc-plated rolled steel allowing the product to flow at the desired rate. The guillotine is operated by two rack and pinions to avoid product retention.

The movable section drive is provided by a geared motor unit regulated by two inductive position detectors controlling the guillotine's opening and closing position.

It should be noted that the guillotine slides on travelling rollers and the hatch sealing is provided by a set of flaps mounted on adjustable brackets.

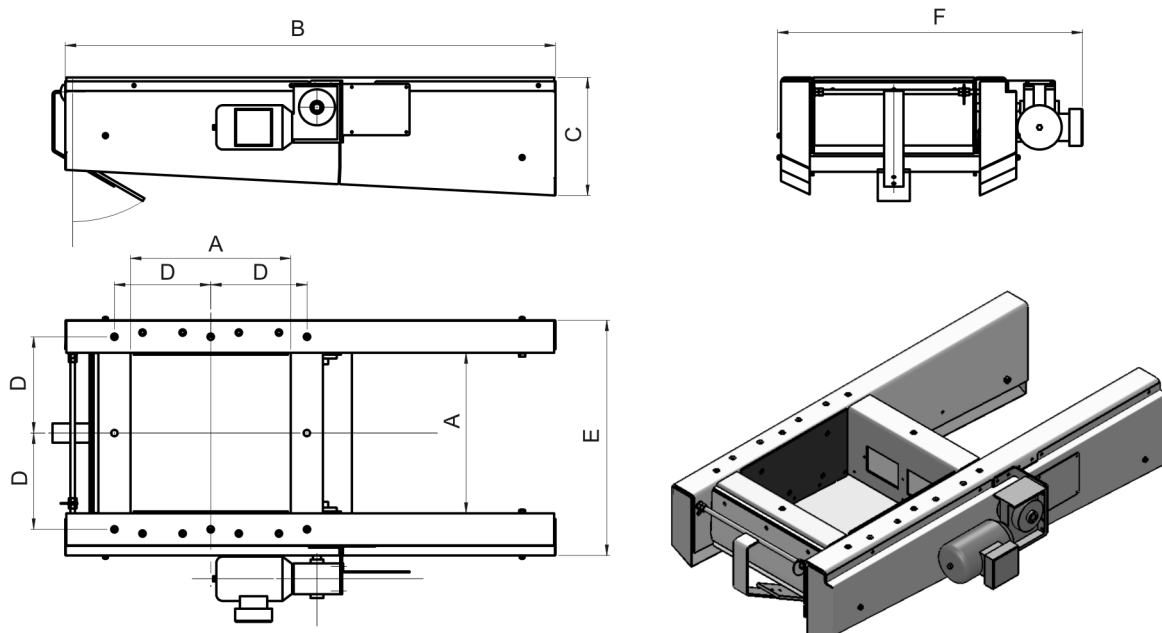
Operator guards have been integrated into the design of the TD volumetric hatch according to the recommendations of the Machinery Directive.

These guards also deflect the product from collecting on the rack & pinions and guide rails.

European Approval

- ▼ Machinery Directive 2006/42/CE.
- ▼ Directive 2006/95/CE for Low Voltage equipment.

Dimensions & Weight

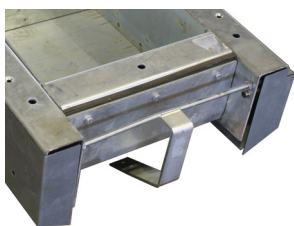


Dimensions in mm.

Model	A	B	C	D	E	F	Gross weight (kg)
TD33	300	1120	350	200	530	750	106
TD44	400	1320	360	250	630	850	135
TD55	0.5	1520	370	300	730	950	162
TD66	600	1720	380	350	830	1050	193
TD77	700	1920	390	400	930	1150	295

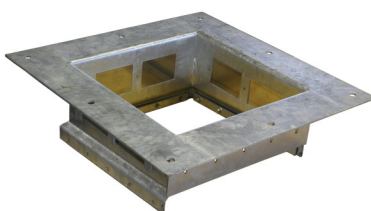
Options & Accessories

Material sensor



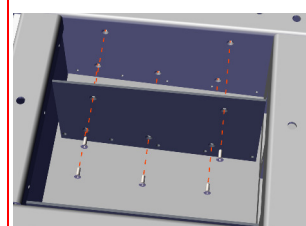
Controlling the product flow passing through the hatch.

Draining device



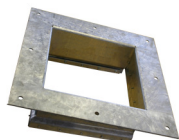
For high humidity products. Allows water to flow through three grates mounted inside the hatch cross-section. A PVC gutter allows collecting water to be discharged.

Wear plates



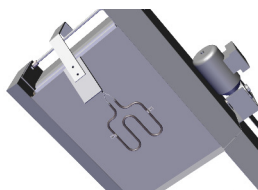
Protection against abrasive products.

Opening cross-section reduction



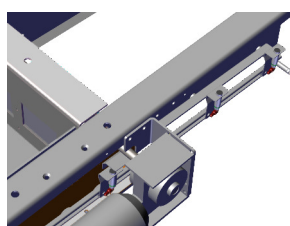
For low flow dosing.

Heater resistance



Freeing the hatch in case of frost.

Interim inductive position detector



Emergency shut-off hatch detector



Your specialist

Non contractual illustrations. Precia-Molen reserves the right to alter the characteristics of the equipment described in this brochure at any time.

Head Office & Factory **PRECIA-MOLEN**
 BP 106 - 07000 Privas - France
 Tel. 33 (0) 475 664 600
 Fax 33 (0) 475 664 330
 E-MAIL webmaster@preciamolen.com

RCS: 386 620 165 RCS Aubenas

